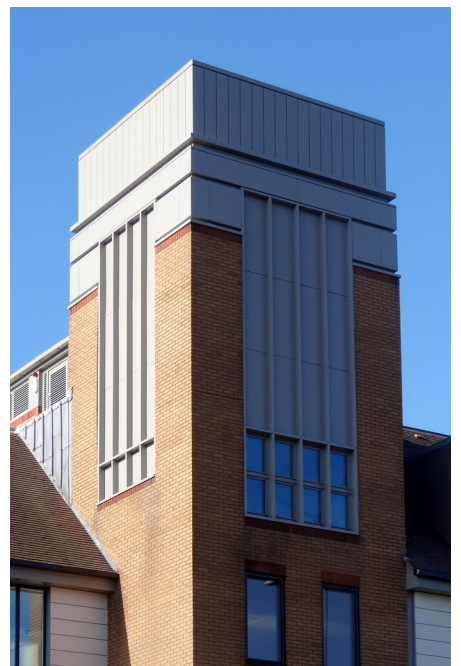
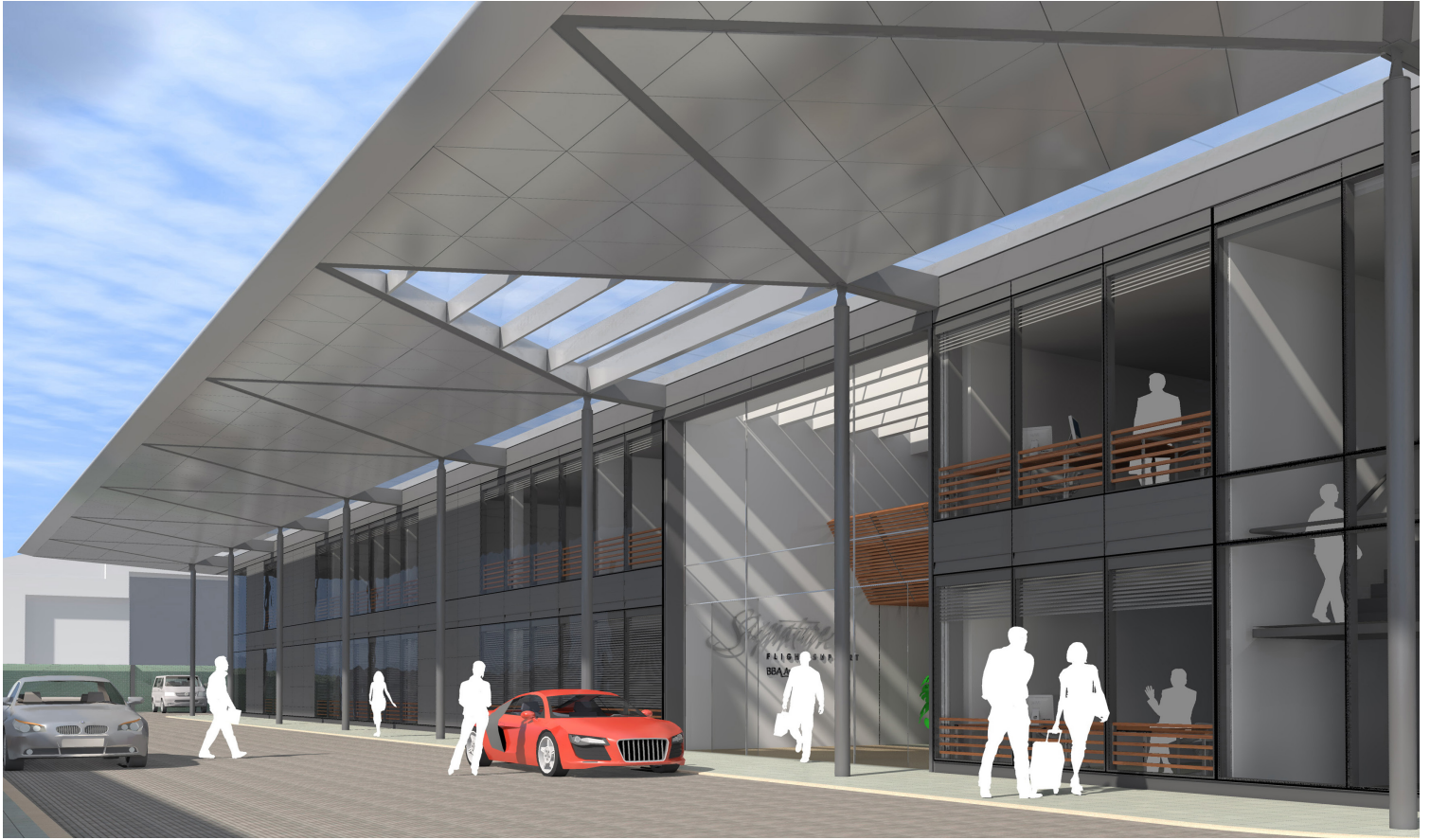




Kew Road



Signature Flight FBO



Location | Luton Airport

Client | Signature Flight

Status | Planning 2010

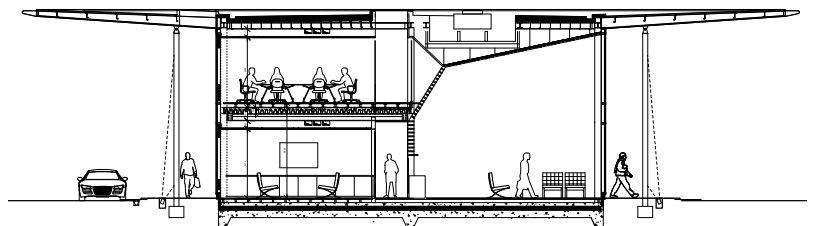
Size |

The concept behind Signature's new FBO is a metaphor for the Imagery of flight.

Taking precedent from the golden era of aviation and buildings such as the Pan Am terminal in at JFK, a dynamic projecting roof line will soar above a lightweight glass and steel box, setting an exciting new silhouette against the Luton Airport skyline.

Customers will experience a genuine sense of arrival, protected from the elements below a reflective silver canopy - sensitively lit at night.

With its narrow depth plan, the new FBO will prompt a direct visual connection between arriving 'drop off' passengers and the aircraft, passing through a double height lounge facing the ramp area. The generosity of scale is reminiscent of the open air cafe at Schipol's 1929 Terminal, where passengers sat and relaxed against the backdrop of exciting airfield activity.



Hale Brown | Architects

Unit 3 - Phoenix Wharf, Eel Pie Island, Twickenham TW1 3DY T: 020 8977 6946 E: mail@halebrown.com W: www@halebrown.com