

Clarendon



Location | Colliers Wood, London

Client | Private

Status | Planning 2016

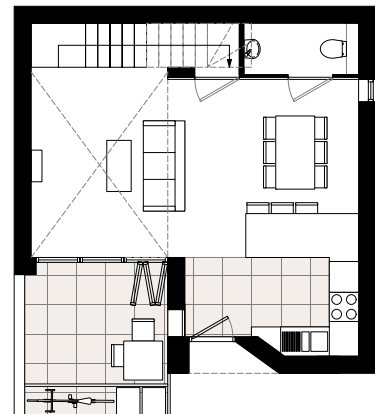
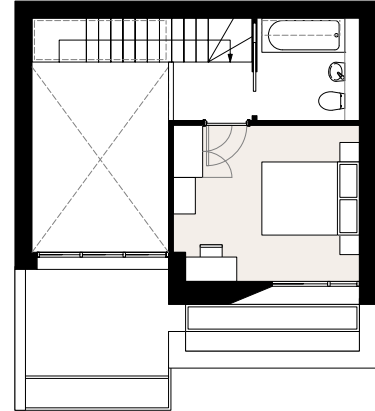
Size | 55sqm

Hale Brown have submitted a planning application for this compact, detached 1-bedroom house in Merton.

The single-aspect design provides a spacious living room/kitchen to the ground floor, overlooking a small courtyard, with bedrooms to the upper floor.

Hand-made brick is to be used externally to clad the house with solid, pre-fabricated timber panels internally, providing a simple palette of materials.

Rooflights provide controlled daylight to the staircase at the rear of the plan.



Hale Brown | Architects

Unit 3 - Phoenix Wharf, Eel Pie Island, Twickenham TW1 3DY T: 020 8977 6946 E: mail@halebrown.com W: www.halebrown.com



Clarendon Road

