

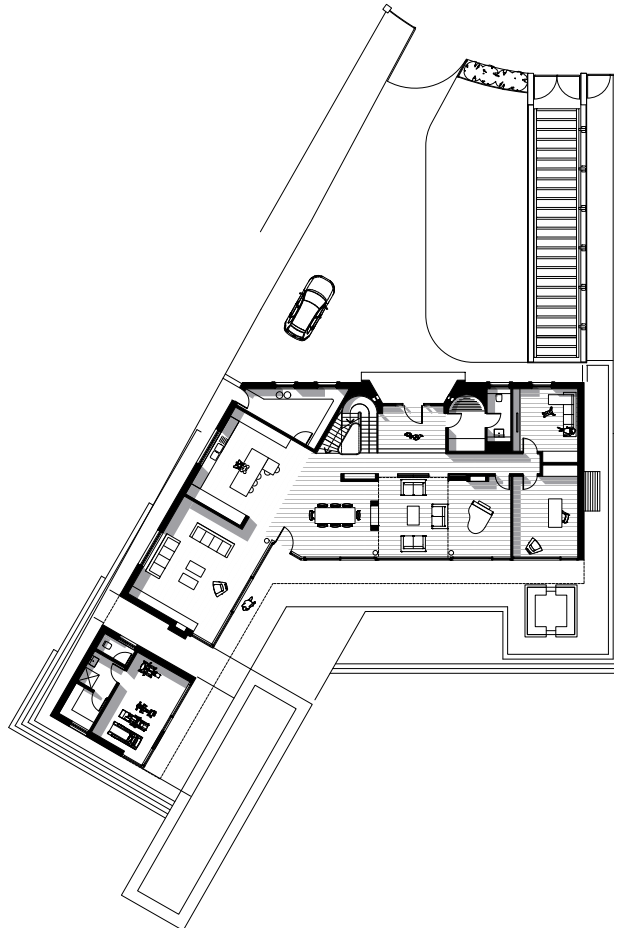
# Eaton Place



**Location** | Cobham, Surrey  
**Client** | Aspire/ Private Client  
**Status** | Completed 2015  
**Size** | 8,500 sqft  
**Contract** | -

The design approach has been to emphasise strong horizontal elements, creating a simple elegant building form that sits well within the surrounding landscape.

A pitched, hipped, slate roof is in keeping with surrounding buildings, but the privacy of the rear elevation allows for a more contemporary approach, introducing large expanses of glazing with views over the extensive garden.



Hale Brown | Architects

Unit 3 - Phoenix Wharf, Eel Pie Island, Twickenham TW1 3DY T: 020 8977 6946 E: [mail@halebrown.com](mailto:mail@halebrown.com) W: [www.halebrown.com](http://www.halebrown.com)





Eaton Place



Hale Brown | Architects

Unit 3 - Phoenix Wharf, Eel Pie Island, Twickenham TW1 3DY T: 020 8977 6946 E: [mail@halebrown.com](mailto:mail@halebrown.com) W: [www.halebrown.com](http://www.halebrown.com)