

# 70 Conduit St, West End



**Location** | West End

**Client** | CBRE

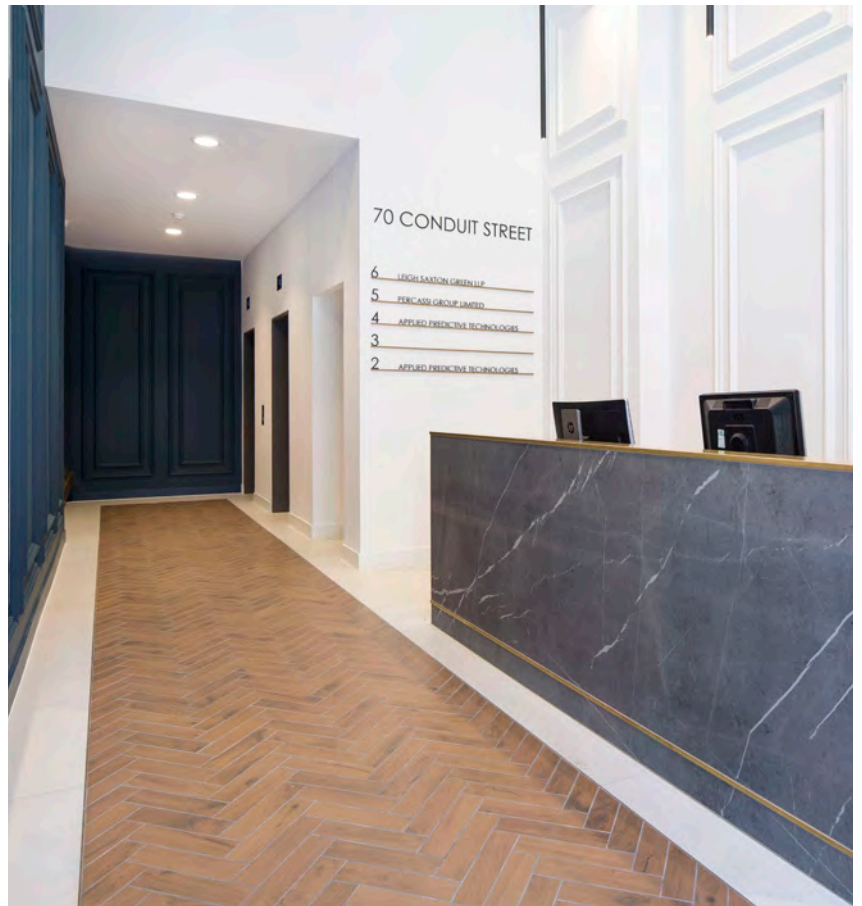
**Status** | Completed April 2019

Situated on a prominent corner site overlooking Regent Street, the office floors in this listed building are heavily constrained due to their triangular shape and low floor-to-ceiling heights

The design solution reconfigured the high-level services pulling them away from the perimeter windows and maintaining access via new, chevron-shaped access panels to mirror the footprint.

A new parquet timber floor adds character along with exposed original features, such as the steel and concrete columns and brick fireplace.

The reception space has been refurbished to provide a space more in keeping with the historic character of the building with brushed brass trims and ironmongery. A large wall mirror helps to visually widen the very tall space and the new marble-clad desk adds to the reflectivity. The timber-effect tiled parquet floor links the reception to the new office aesthetic above and the dark blue colour scheme takes it cue from the existing office wall panels.



halebrown architects

