

One Hyde Park, Hayes



Location | Hayes

Client | Morgan Lovell

Status | Completed October 2019

Contract Value | £11.5million

Web | www.halebrown.com/hph

HBA have completed the remodelling and refurbishment of this 110,000sqft office building in collaboration with Morgan Lovell.

The design reconfigured the front entrance experience with the addition of a new entrance portico, automated sliding doors and removal of existing staircases to open up the frontage

The reception area now provides a range of waiting and informal meeting spaces and a new feature staircase situated in the heart of the building, which leads up to a new communal roof terrace. The triple-height atrium is animated by new curved access balconies, concrete soffits with LED strip lighting and a large rotating light feature.

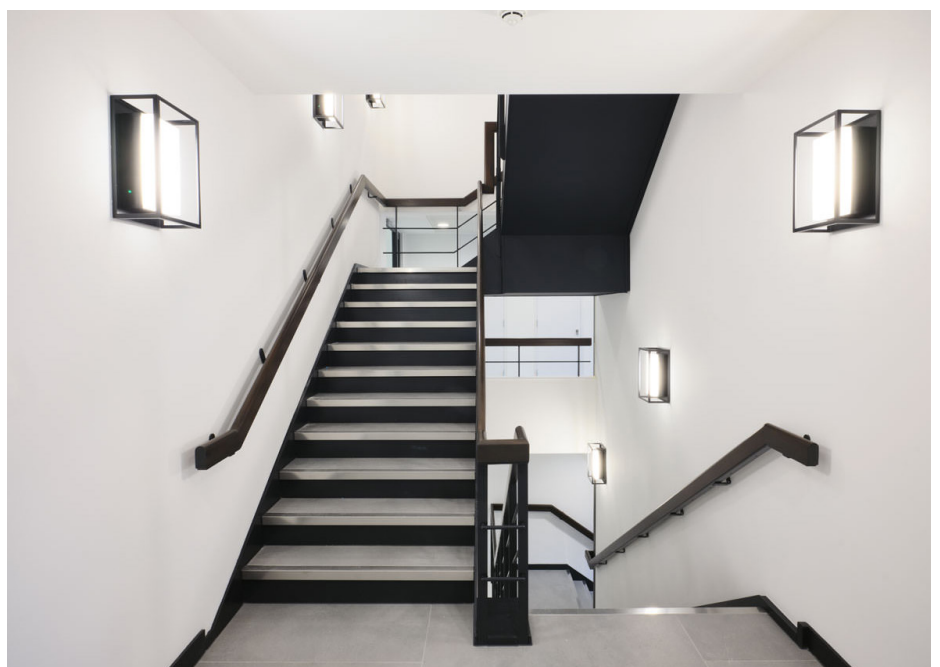
As well as the main reception, there is a secondary reception to the southern end of the building to create flexibility and the potential for splitting the floor plates

Cores have been reconfigured to provide improved WCs to both the front and rear of the building and new showers and bike storage added. The office floors have been refurbished with all new mechanical services and enhanced ceiling heights

The existing exterior cladding of the building has been resprayed and the ground floor glazing enhanced.



halebrown architects



halebrown architects



halebrown architects