

Culverdon House, Chertsey



[Location](#) | Chertsey

[Client](#) | Berwick Hill

[Status](#) | Completed 2016

[Contract Value](#) | £2.0million

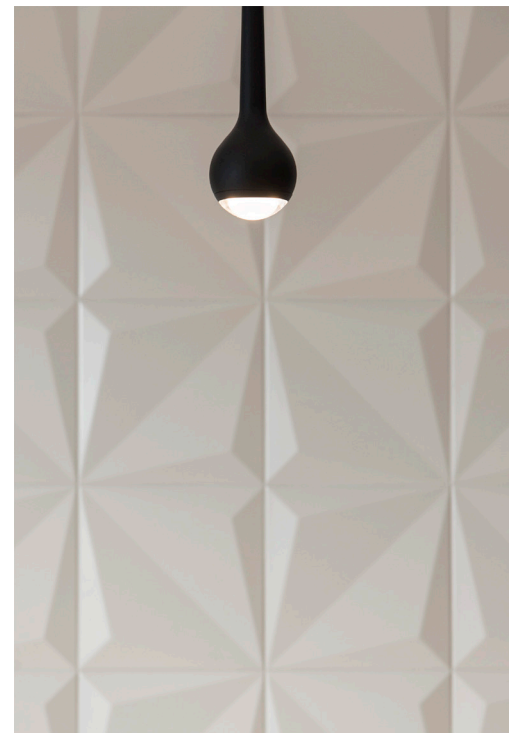
HBA have completed this striking Cat A refurbishment of 25,000sqft of office space and common parts, in this existing prominent office building.

An existing, heavy stone portico was removed and an old escape corridor incorporated into a widened reception space, as well as the ground floor lift lobby.

A new, faceted entrance portico clad in fibre-cement panels, sets up a design language that is carried through into the reception area, the refurbished wcs and the chamfered lift openings.

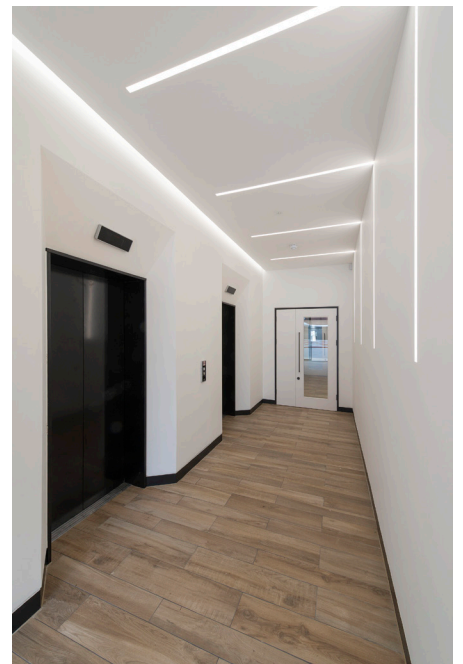
Modern, linear lighting adds drama to the lift lobbies and a palette of modern natural materials includes carrara marble, timber-effect floor tiling and a new living, 'green' wall in reception.

New showers, lockers and bike storage have also been added in the extensive underground car park.



halebrown architects

Unit 2.01, Chester House, Kennington Park Business Centre, London, SW9 6DE [T: 020 8977 6946](tel:02089776946) [E: mail@halebrown.com](mailto:mail@halebrown.com) [W: www.halebrown.com](http://www.halebrown.com)



halebrown architects

Unit 2.01, Chester House, Kennington Park Business Centre, London, SW9 6DE T: 020 8977 6946 E: mail@halebrown.com W: www.halebrown.com