

20-22 Bedford Row, Holborn



[Location](#) | Holborn

[Client](#) | Aviva Investors

[Status](#) | Completed December 2018

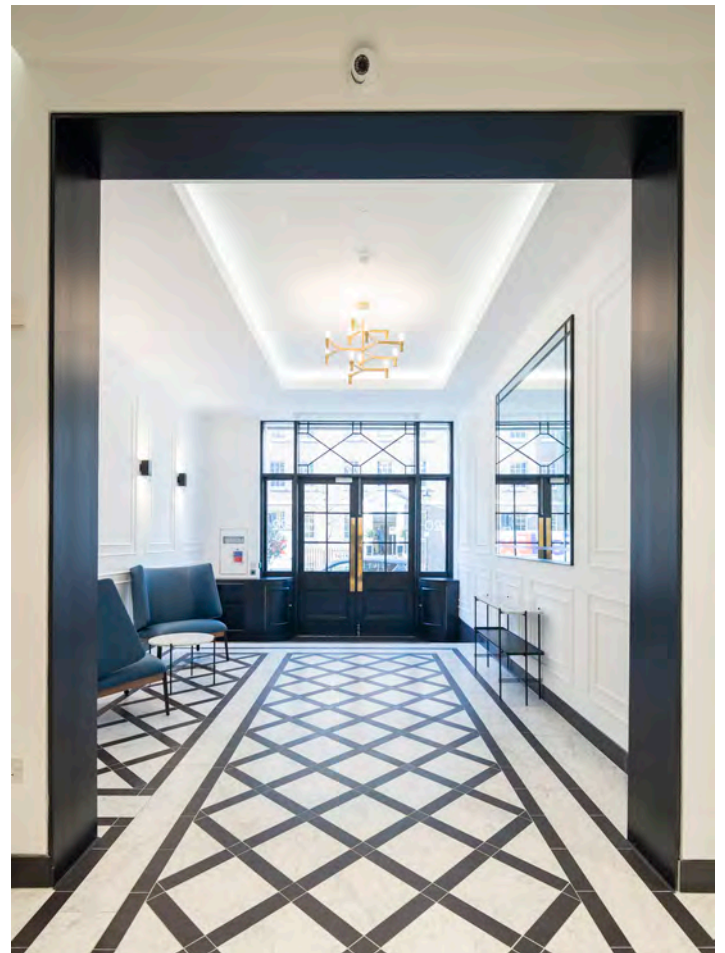
[Contract Value](#) |

HBA have redesigned and refurbished the reception area, common parts and 2no. office floors of this large, prominent office building in Holborn.

The existing entrance was transformed with a new feature tiled floor, plaster wall panelling, new feature lighting, external signage and rationalised fixtures and fittings

The office floors were more of a challenge as existing deep beams had resulted in a low suspended ceiling, to accommodate ductwork, cutting off the top of the large windows. HBA in collaboration with the M&E consultants have designed a new layout that has concealed ducts and pipework in false beams, creating a new coffered ceiling arrangement. Ceiling heights are maximised and feature light fittings accentuate the new look.

A fantastic existing parquet floor was discovered under the old carpet and refurbished along with new wall-mounted FCUs and casings with integrated power and data at low level.



halebrown architects

